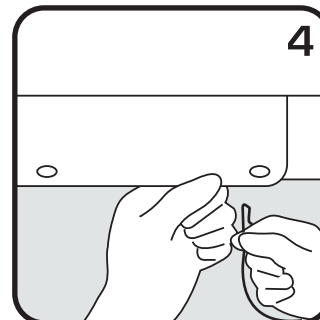
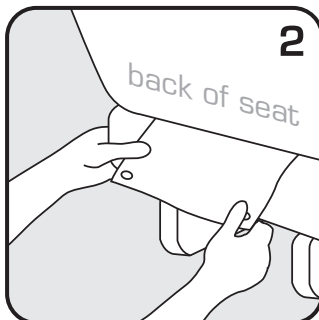


CoPilot™ seat cover

INSTALLATION INSTRUCTIONS

Instructions:

1. Pull the seat cover over the top of the seat and adjust accordingly for a smooth fit
2. Slide the seat flap through where the back of the seat and bottom of the seat meet
3. Fit the bottom of the seat cover over the bottom of the seat.
4. Pull the seat flap tightly in place and hook the two elastic straps onto the flap



Care:

Spot clean with mild solution of soap and water. Machine wash in front loading machines when needed. Air dry.

CAUTION:

This cover should not be used in vehicles equipped with side air bags or on seats with integrated airbags. Check with your vehicle manufacture for details. Use of this seat cover may interfere with deployment of side air bags.



See the complete Dog Travel line at kurgo.com

11/08
English