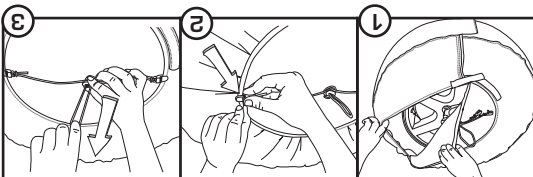


Direction:

1. Put Tire Tote on wheel
- 1a. Insert Wheel Felt between tire & Tire Tote.
2. Clip bungee to outside edge of Tire Tote.
3. Hold cord lock & pull bungee to reduce slack.



Tire Tote® WHEEL FELTS



For use with
Tire Totes

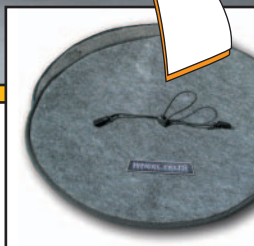
Includes Two
Wheel Felts

Tire Tote® WHEEL FELTS

**PROTECT YOUR WHEELS
FROM NICKS & SCRATCHES!**



- Protects rims from nicks & scratches
- Additional level of protection from tire & brake residue
- Two durable 1/2" thick felt pads
- Easy to install
- Large ventilation hole
- One size fits all Tire Tote bags



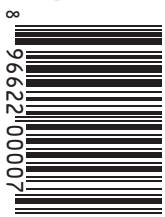
kurgo

www.kurgo.com :: 877-847-3868

Made in China
Copyright 2005
Motivation Design
All rights reserved

1 Year Warranty

8



Part #00007